

WHAT FILE TYPES? ANOTHER TREASURE TROVE OF SETTINGS IN TRADOS STUDIO

Tuomas Kostiainen (tuomas@jps.net)

www.finntranslations.com

Abstract: Many Trados Studio users are unaware of the various file type options that Studio offers. In most simple translation situations, this may not be needed because Studio functions fine with the default settings. However, knowing what these settings do and what you can do with them can be very useful. This session will provide a general overview of Studio file type options. Attendees will learn about some specific examples where knowing these settings can be a real productivity booster, such as when translating partially translated Excel files or Excel files with HTML tags, or when you want to translate Wordfast files in Trados Studio.

1. What are File Types and File Type settings?

- Trados Studio 2017 supports over 40 different file types, such as MS Word, Excel, InDesign, PDF, html, and xml.
- File Type settings control what is extracted from the supported file types for translation, and because of this, the correct File Type settings need to be selected before Studio converts the source file into SDLXLIFF format.
- File Type settings are accessed either via File > Options or Project Settings depending on what needs to be done. When creating a new single file project, the settings can also be accessed by selecting the **Advanced...** button in the [Open Document dialog](#) (= Translation Memory and Document Settings) (see Figure 2). When creating a new Studio project ("multi-file project"), the settings can also be accessed by selecting the **File Types...** button in the Project Files dialog (see Figure 3).
- The order of file types can be changed, if needed. Studio always uses the topmost matching file type (that has a checkmark in the box).
- For more information, see a general [overview of the function and settings](#) of file types.
- Additional file types are available from the [SDL AppStore](#), such as for Wordfast TXML, MemoQ XLIFF, Memsource MXLIFF, and TMX.

2. Sample File Types and Settings

A. MS Word

- DOC/DOCX/RTF: Common (hidden text, tw4winMark style, track changes, issues with inline tags, comments)

B. MS PowerPoint

- PPT/PPTX: Common (incl. headers, notes, hidden content, comments)

C. MS Excel

- XLS/XLSX: Worksheet name, Color (note that this means the font color, not the fill color), Common (incl. comments, headers, hidden content), Embedded content
- More about embedded content: The Excel 2007-2016 file type includes a generic placeholder tag definition (`</?[\p{Ll} \p{Lu}] \w* [^<>] *>`) that converts HTML tags to placeholder tags. You can also add rules for specific tag pairs or tag pairs in general, for example: `< [^ /] * ? >` (= all opening tags) and `< / . * ? >` (= all closing tags). For more info, see this [blog article](#).
- XLSX (2007-2016): Exclusions

D. Bilingual Excel

- XLSX: Common (incl. source/target column, excluded text, existing translations, preview), Embedded content
- This can also be used to convert bilingual Excel tables to SDLXLIFF files and to Studio memory

E. HTML

- HTML 4 & 5: [Parser](#) (determines what content is extracted for translation), Entities (specify how to display character entities in the Editor view), Embedded content

F. Adobe InDesign

- INX/IDML: Common (Process unsupported file versions)

G. XLIFF

- XLIFF: Settings, Segment status mapping, Embedded content
- XLIFF 2.0
- MemoQ XLIFF: Segment status mapping
- Wordfast TXML

H. PDF

- PDF: Converter, Common

I. XML

- Several XML types
- Any XML can be used for non-specific XML files
- For additional info, see this [blog article](#).

J. Embedded Content Processors

- These are used to process embedded content (plain text, HTML or Excel content) in XML and HTML files. NOTE: For embedded content in Excel files, use the "legacy" embedded content processor in the matching Excel file type,

as explained above (2.C. MS Excel). For details, see the [Embedded Content](#) topic in the Help file.

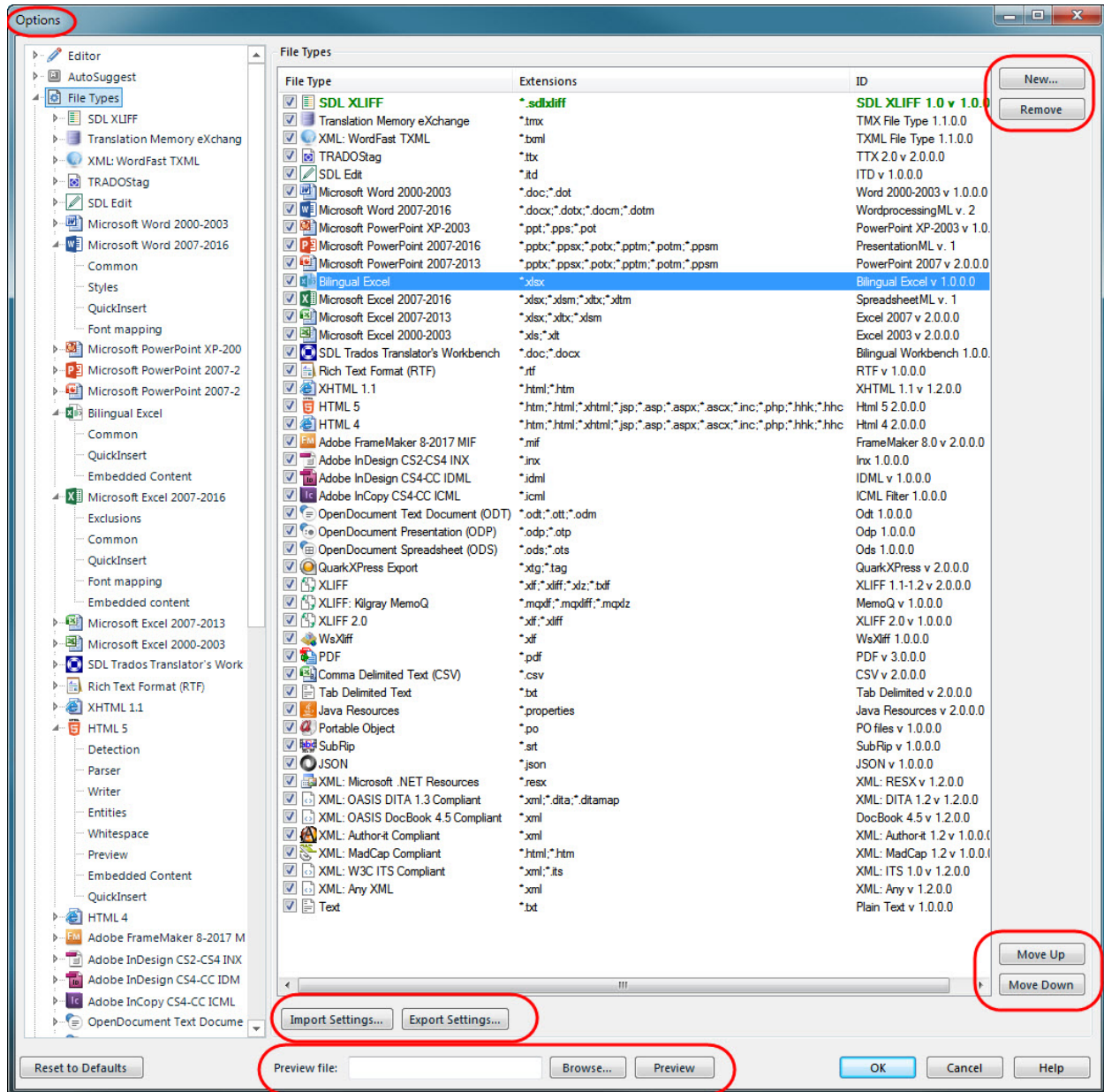


Figure 1. File Types in the Options settings in Trados Studio 2017.

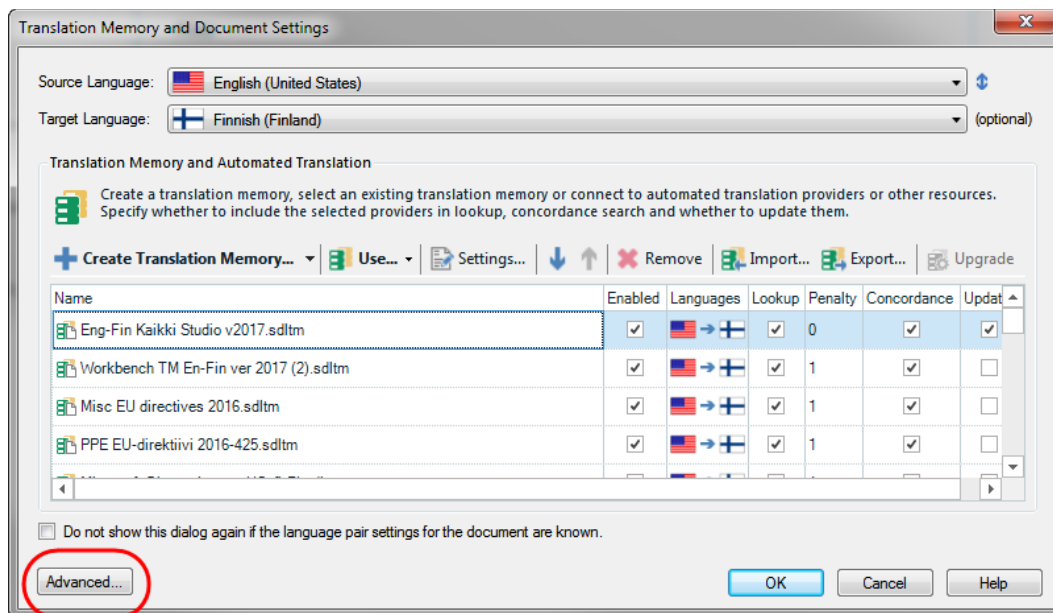


Figure 2. Selecting File Type settings when creating a single file project in Trados Studio 2017.

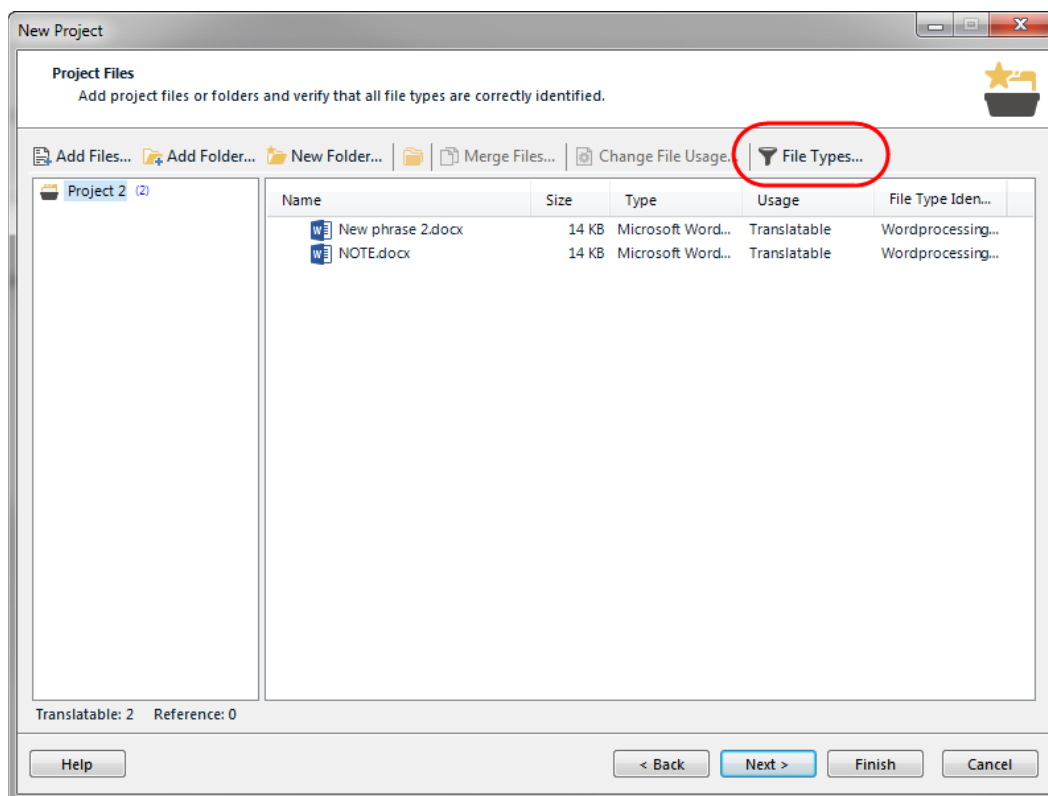


Figure 3. Selecting File Type settings when creating a Studio project in Trados Studio 2017.